

COLORSCOPE

by CADRY
1952

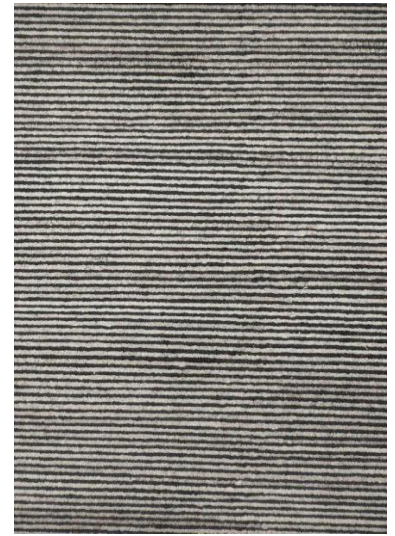
SPECIFICATION SHEET

Collection:	The Boheme Collection
Description:	Using Handspun, natural and undyed yarns in both a cut and loop Handknotted construction, the Boheme rug with its versatile neutral tones is the perfect addition to both coastal and country interiors.
Design:	Ribbed
Construction:	Handknotted
Material:	Handspun Wool
Colours:	Charcoal, Natural, and Steel
Size:	200x300, 250x300, 250x350, 300x400, 350x450
Custom:	Yes
Warranty:	12 month limited warranty for domestic use Commercial warranty N/A
Rug Care:	Vacuum regularly (beater bar must be turned off). Occasionally loose yarn ends will rise above the pile surface. This is a characteristic of the type of weave, and all hand tufted rugs, not a manufacturing fault. The loose yarns can be carefully trimmed or pushed through. Piling can occur due to traffic, moving of furniture, vacuuming or other mechanical agitation. This can be carefully timed with scissors. Often new rugs begin to produce fluff as a result of loose fibres that remain in the rug after the manufacturing process. This is not a fault of the rug, but a standard characteristic of woollen rugs. With regular vacuuming this will reduce over time. Remove solids with a soft bristle brush, blot spills immediately; for hard-to-remove stains professional rug cleaning is recommended. Placing rugs in direct and continuous sunlight will cause them to fade. It is best to avoid placing a rug in direct sunlight if possible, and to regularly rotate your rug if sunlight is falling on one area of the rug. Fading will happen slowly over time, and this bleaching effect will permanently damage your rug. It occurs more obviously with darker coloured rugs and natural fibres. Try to rotate your rug often to ensure even wear. Be aware that some heavy furniture can mark and flatten the pile in rugs, causing irreversible damage. Some heavy or sharp-edged furniture pieces, or constant moving of furniture/chairs, will damage your rug.
Manufacturing Variations	Please allow 5% to 8% variance in dye lot and size. Every effort is made to ensure there is minimal colour/size variation, however some can be expected.

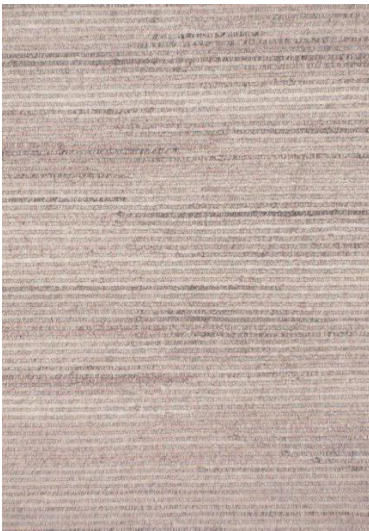
COLORSCOPE

by CADRY
1952

Charcoal



Natural



COLORSCOPE

by CADRY
1952

Steel

